

# Domino G-Series



Simple code formats

*For high-quality, high-speed printing of 1 & 2D codes, text and graphics on porous and non-porous substrates using **Thermal Ink Jet** technology*

The Domino G-Series is the only TIJ solution that has the ability to print with solvent based fluids onto a variety of substrates.

- High quality complex codes up to 600dpi
- High speed coding up to 300m/min
- Multi substrate fast drying inks
- Range of print heights from 12.7mm – 50.4mm
- Easy maintenance

## MAIN FEATURES

### Unique multi substrate fast drying ink

- Specially developed inks for permanent codes on non-porous substrates
- Single solution for printing onto porous and non-porous surfaces

### High resolution printing

- High definition machine readable codes for enhanced traceability e.g. 2D datamatrix
- High speed multi-line capability

### Easy maintenance

- Simple and clean cartridge fluid replacement
- Cartridge contains printhead and ink supply
- New printhead with each consumable change
- Simple operator training

### Flexibility

- Ability to run multiple heads from single controller
- Built in Ethernet port so printers can be networked
- Simplified power on/off, no need for long shut down or start up procedures
- Prepare /edit messages while printer is running to reduce product changeover times



High quality codes on a wide variety of substrates



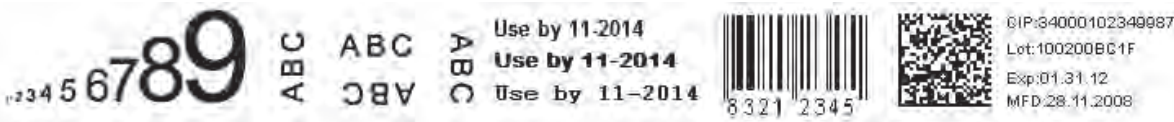
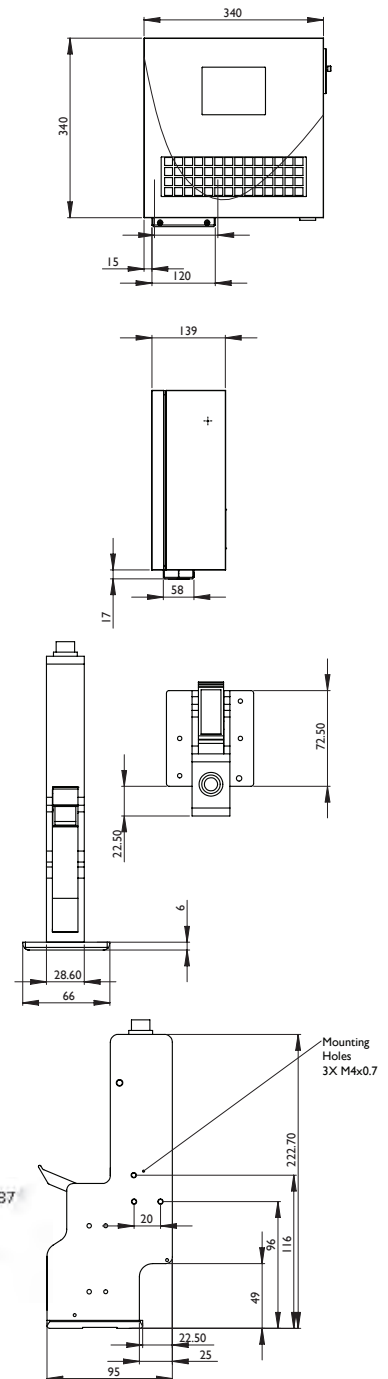
High speed printing of complex codes



# TECHNICAL SPECIFICATIONS

CONTROL UNITS	G100	G200	G300
<b>PRINTHEADS</b>			
Number of printheads per controller	2	4	4
Number of print groups	2	2	4
Print speed	300m/min (984 ft/min) dpi dependant or 60 m/min @ 300dpi		
Maximum print height	25.4 mm / 1" (2 x 12.7mm)	50.8 mm (2") (4 x 12.7mm)	50.8 mm (2") (4 x 12.7mm)
Graphics		•	•
Barcodes (EAN 8, UPC-A, UPC-E, EAN13, Code39, EAN128, Code128, ITF14)		•	•
2D Barcodes (Datamatrix, GS1-128)		•	•
Fonts	Arial/Courier only	Unlimited	Unlimited
<b>DIMENSIONS – CONTROLLER</b>			
Length	340mm (13.38")		
Width	340mm (13.38")		
Depth	139mm (5.47")		
Weight	10 kg, 22 lbs		
<b>PRINTHEAD – STANDARD</b>			
Length	222mm (8.74")		
Width	95mm (3.74")		
Depth	28.6/66mm (1.13/2.6")		
Conduit length	5, 10, 25m available		
INKS	Water, Solvent Based		
<b>RANGE SPECIFICATIONS</b>			
Construction	Powdered coated steel		
User Interface	Graphical LCD Voltage 90 – 264 VAC Frequency 47 – 440 Hz Power 80 VA		
Electrical Requirements			
Features	Ethernet Capable, RS232, Alarm output, CAN bus, BCD		

All dimensions in mm (inches).



Representation of print quality only, final quality is dependent on substrate and printer operating conditions.